

MARK-3[®]

SERIES

185cc Crankcase Halves Set

Overview:

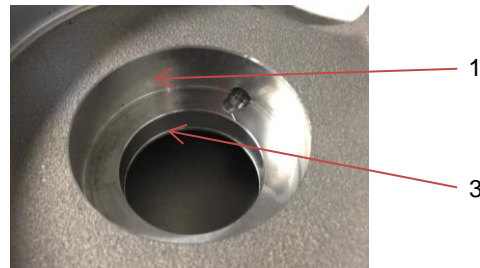
The new engine crankcase halves set for the MARK-3 is officially available as of August 1st, 2014. The previous model R-152 (800052) is obsolete; it has been replaced by model R-152N (701111).

The new crankcase is fully retrofitable; it will have minimal impact on engine assembly and repairs. The following improvements have been made to the new crankcase:



Burnished bearing bore

The bearing bores are burnished for increased surface hardness and durability. (1)



Impregnation

100% of crankcases are porosity sealed through a dry vacuum pressure impregnation process to eliminate the risk of porosity leaks.

Serial number

The serial number is milled on both crankcase halves for error free set matching. (2)



Shoulder seat

A shoulder seat has been machined on the seal bore of the magneto half of the crankcase; peening is no longer necessary. (3)