



# PORTABLE PUMPS PRODUCT GUIDE





# Trusted by wildland firefighters since the 1920s

## TABLE OF CONTENTS

**MARK-3®** Watson Edition ..... 10

**MARK-3®** Portable Fire Pump..... 18

**BB-4®** High-Pressure Portable Fire Pump ..... 20

**B2X™** Mid-Range Portable Fire Pump..... 26

**STRIKER™** High-Pressure Portable Fire Pump ..... 32

**MINI-STRIKER®** Lightweight  
Portable Fire Pump ..... 36

**VERSAX®** Multipurpose Portable Fire Pump ..... 40

Tool Kits & Fuel Tank Accessories ..... 48

## COMPANY PROFILE

WATERAX has a long, proud and exciting history of moving water around the world. WATERAX originated as Watson Jack & Company, which was founded in 1898 by Montreal, Quebec native John Colquhoun Watson Jack. Born on August 19, 1870, Jack was a Canadian inventor, businessman and trail-blazer.

Since the 1960s, the MARK-3® series has been the gold standard in performance, reliability and durability. The MARK-3® is the standard wildland portable fire pump trusted by forestry agencies around the world and a truly innovative Canadian success story. Between the 1980s and 2010s the company continued to transform, operating under different banners until it was incorporated into WATERAX in 2014. Based in Montreal, Quebec, today the company exports wildland firefighting equipment to over 50 countries around the world.

WATERAX is a vibrant, Montreal-based company whose work makes a real difference to wildland firefighters worldwide. We're a successful, multi-disciplinary team of professionals who share a core belief in teamwork and reward for a job well done.

A product is only as good as the service behind it. At WATERAX, we back up our quality products with steadfast service. Trust us to be there when you need us.

Quality. Reliability. Trust. Our pumps are as tested and proven as the men and women who use them every day.

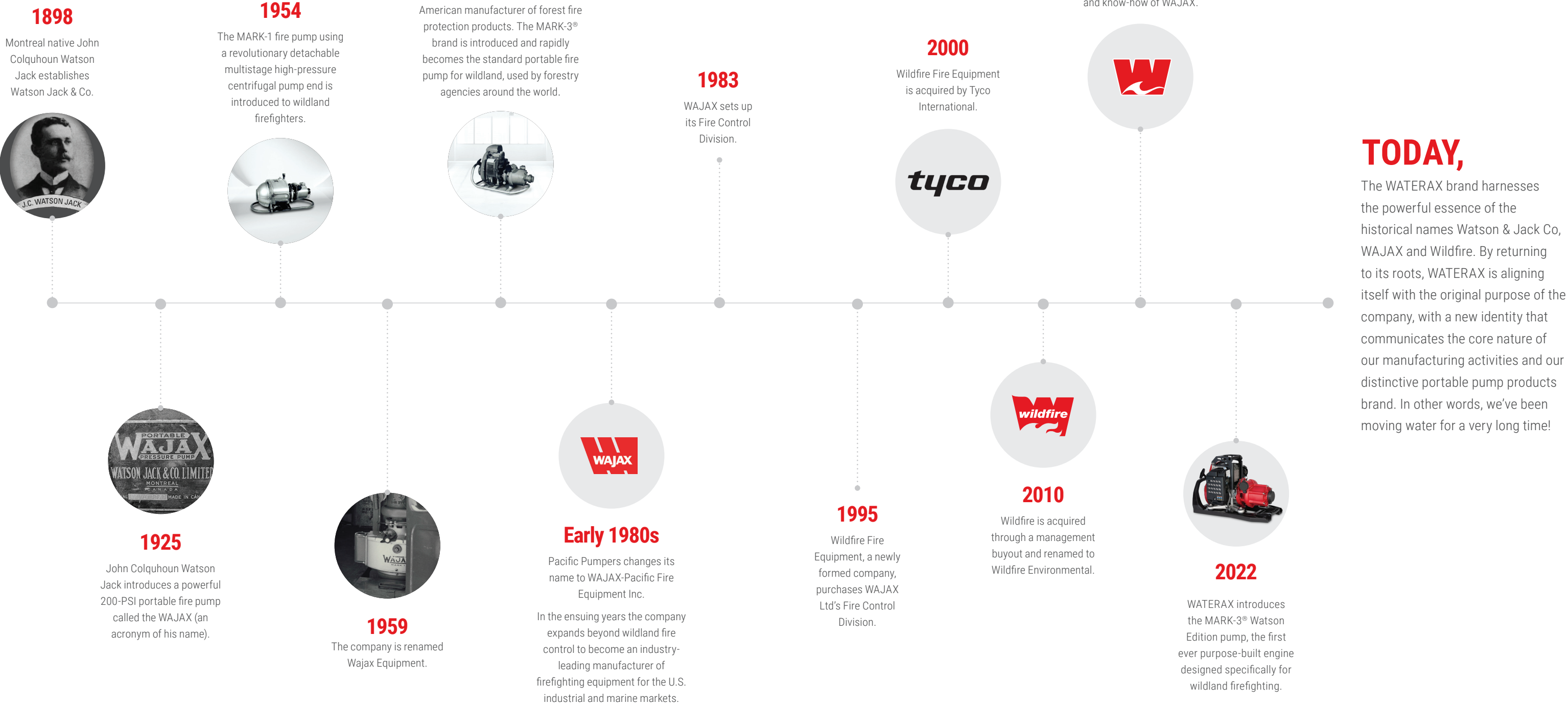
## OUR MISSION

The WATERAX mission is to place powerful, precision engineered lightweight portable pumps into the hands of our heroic wildland firefighters to move water to keep people safe, protect our forests and communities from the ravages of wildfires.

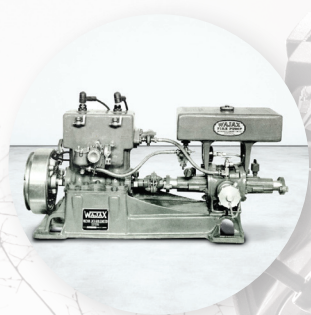




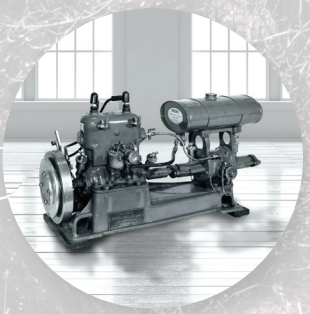
# WATERAX'S LONG AND PROUD HISTORY







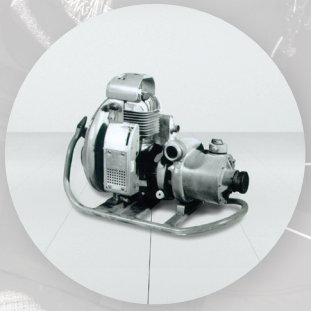
**1929-1938  
WAJAX DDVC**



**1938-1952  
WAJAX DDVA**



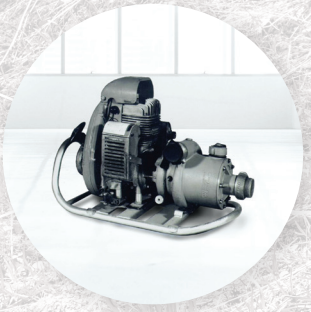
**1954-1960  
WAJAX MARK-1**



**1963-1964  
WAJAX MARK-2M**



**1961-1962  
WAJAX MARK-2**



**1964-2013  
WAJAX MARK-3®**



**2014-  
WATERAX MARK-3**



**2022  
WATERAX MARK-3®  
WATSON EDITION**

# 125 YEARS OF MOVING WATER

We are thrilled to announce that 2023 marks 125 years of Moving Water for WATERAX. Our journey started in 1898, and we are proud to continue serving the firefighting industry with innovative and reliable products.

We take pride in our pump innovation journey that began with the WAJAX DDV and led to the new MARK-3® Watson Edition, which is named after our founder, John Colquhoun Watson Jack. This first ever purpose-built engine for wildland firefighting sets a new benchmark of excellence for high-pressure fire pumps and is the first of its kind in the industry.

We are proud to continue our mission to place powerful and efficient pumps into the hands of wildland firefighters, and we remain committed to moving technology forward while maintaining our tradition of excellence.

We look forward to the next 125 years of Moving Water and working together to create a safer and more resilient world.



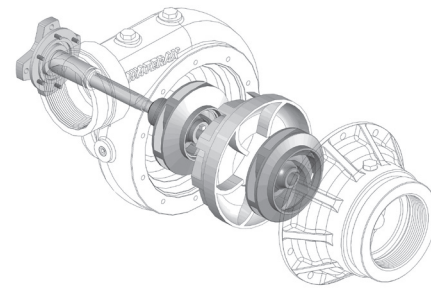
# THE WATERAX WAY

WATERAX is proud to continue its almost century-long tradition of designing, manufacturing and supporting high-performance and durable portable pumps. The key to its success lies in its ability to craft high quality components which form the cornerstone of superior and dependable pump performance.

## DETACHABLE MULTI-STAGE PUMP ENDS

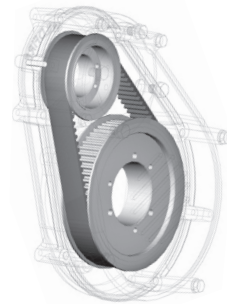
WATERAX performance and dependability come from our superior multi-stage pump end design that provides unrivaled pressure and volume.

Unique blister resistant mechanical rotary seal to prolong pump end longevity. Maintenance free sealed bearing to avoid the need for greasing the pump end in the field. Anodized aluminium impellers and pump body which eliminate galvanic corrosion common with bronze impellers.



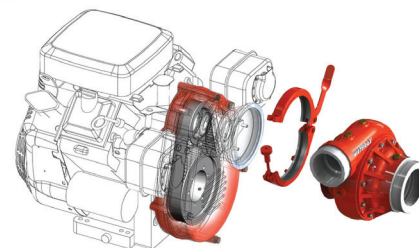
## LOW MAINTENANCE DRIVE ASSEMBLY

Originally designed for the BB-4®, the WATERAX low maintenance drive assembly has been time-tested under the most difficult conditions and proven to be dependable and reliable for more than 40 years.



## INNOVATIVE QUICK-RELEASE CLAMP

Our innovative pump end quick-release clamp provides ease of maintenance without having to disassemble the complete unit, thus significantly reducing equipment downtime, which can prove crucial in emergency situations.



## CONVENIENT 2-IN-1 SYSTEM

The WATERAX 2-in-1 system enables the easy interchanging of pump ends in the field. The platform is also compatible with either a high-pressure or a mid-range pump end, providing users with maximal performance flexibility at the lowest possible cost.

# THE WATERAX PLATFORM

WATERAX offers a complete line of high performance pump ends suited to meet the most difficult water handling requirements. The WATERAX platform is composed of a low maintenance drive assembly, a Mid-Range pump end and four high-pressure pump ends. The platform's unique feature is its quick-release clamp system which allows for the hook up of any WATERAX pump end to its drive assembly as well as almost instantaneous pump end detachment and interchange. This reduces equipment downtime, increases its flexibility and significantly cuts costs. These components are ideal for original equipment manufacturers looking to adapt high quality pump ends to their respective fire apparatus.

## WATSON EDITION PUMP END

The Watson Edition Pump End is a 4-stage high-pressure pump end that delivers the same optimized hydraulic efficiency as other pumps in its category, but with 40% less weight due to its corrosion-free composite material and compact frame featuring impellers that are 25% smaller.



**MARK-3® Watson / 4-stage**

## HIGH-PRESSURE PUMP ENDS

The WATERAX high-pressure centrifugal pump ends are offered in 4-stage, 3-stage, and 2-stage configurations. They deliver pressure up to 440 PSI (30.3 BAR) and flows reaching 106 GPM (401 L/min) and are ideal pump ends for moving water over long distance and high elevation.

In addition, all these pump ends have interchangeable spare parts. This helps keep inventory levels and costs low while maximizing the utility and versatility of each stored part. The quality, reliability and durability of these pump ends are what makes them the most trusted in the fire industry.



**12-16S / 4-Stage**



**18-16S / 3-Stage**



**25-16S / 2-Stage**

## MID-RANGE PUMP END

The WATERAX B2X is a Mid-Range 2-stage centrifugal pump end that delivers pressure up to 200 PSI (13.8 BAR) and flows reaching 300 US GPM (1136 L/min). A strong show of pressure and volume it is the ideal pump end for dual attack lines dedicated to wildland & urban interface operations.

It is also perfect for high volume remote watering, booster line applications, brush trucks, slip-on units and for uphill tandem operations. The suction and discharge use a combination of Victaulic and national pipe threads to facilitate its plumbing.



**B2X / 2-Stage**

## DRIVE ASSEMBLY

WATERAX offers an outstanding drive assembly that boosts the performance of pump ends. The drive assembly increases the speed of pump revolutions resulting in increased pressure and volume. The drive assembly is used with the WATERAX quick-release clamp to enable the coupling of the drive assembly to the desired pump end.



**C-7220 / Drive Assembly**



# WATERAX PUMPS

WATERAX has a 120-year track record developing and implementing innovative water-moving solutions designed to withstand the demanding situations and rugged environments in which they are used.

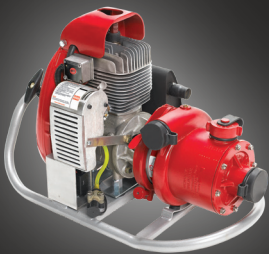
## MARK-3<sup>®</sup> WATSON EDITION

Maintaining the tradition while moving technology forward: the MARK-3<sup>®</sup> Watson Edition plugs right into your existing MARK-3<sup>®</sup> water-moving systems. It will set a new benchmark of excellence for high-pressure fire pumps in the wildland firefighting community for generations to come.



## MARK-3<sup>®</sup> PORTABLE HIGH-PRESSURE FIRE PUMP

The 4-stage detachable pump end patented in 1958 gave birth to the iconic MARK-3<sup>®</sup>. Since WAJAX first introduced the MARK-3<sup>®</sup> in 1964, it has been the standard wildland portable fire pump used by forestry agencies around the world. A truly outstanding and reliable performer, the MARK-3<sup>®</sup> fire pump is designed to withstand the rigors of firefighting and it is at the core of most water delivery system in wildland operations.



## BB-4<sup>®</sup> HIGH-PRESSURE FIRE PUMP

The BB-4<sup>®</sup> is a full line of high-pressure centrifugal pumps that has been used by forest agencies for over 40 years in Type 6 brush trucks. It has become the weapon of choice in wildland operations. The BB-4<sup>®</sup> comes in portable & vehicle-mounted configurations and all models feature a unique greaseless sealed bearing and a blister-resistant mechanical rotary seal. The 4-stage pump end on the BB-4<sup>®</sup> is identical to the pump end on the MARK-3<sup>®</sup> unit which greatly reduces your spare parts inventory and improves your ability to respond to unforeseen equipment damage.



## BB-4<sup>®</sup> DIESEL HIGH-PRESSURE FIRE PUMP

The legendary BB-4<sup>®</sup> is available in Diesel! Strong enough to operate as a source pump for tandem and parallel pumping, it is also optimal for direct attack firefighting, remote watering, sprinkler systems, and is a popular choice for slip-on units. The 4-stage pump end on the BB-4<sup>®</sup> is identical to the pump end on the MARK-3<sup>®</sup> unit, which greatly reduces your spare parts inventory and improves your ability to respond to unforeseen equipment damage.



## B2X<sup>™</sup> MID-RANGE PUMP

The B2X<sup>™</sup> is a full line of Mid-Range portable pumps that delivers the best performance of its class with minimal operating costs. The B2X<sup>™</sup> comes in portable & vehicle-mounted configurations and is powered by Briggs & Stratton Vanguard or Honda 4-stroke engines.



## B2X<sup>™</sup> DIESEL MID-RANGE PUMP

A strong show of both pressure and volume makes it the ideal pump for vehicle-mounted applications dedicated to municipal and wildland urban interface operations. The WATERAX quick-release clamp provided on the B2X<sup>™</sup> pump provides ease of maintenance without having to disassemble the complete pump unit thus significantly reducing equipment downtime.



## STRIKER<sup>™</sup> HIGH-PRESSURE FIRE PUMP

The STRIKER<sup>™</sup> is a full line of high-pressure fire pumps powered by Honda 4-stroke engines. Applications include cabin protection, skid units and snow making.



## MINI-STRIKER<sup>®</sup> LIGHTWEIGHT HIGH-PRESSURE FIRE PUMP

The MINI-STRIKER<sup>®</sup> pump pairs a reliable single stage pump end with the Honda 4-stroke 2.1 HP engine. Extremely portable and lightweight this mini powerhouse performs well when used by itself or in tandem with other pumps, and is a very popular choice for entry level skid applications.




## VERSAX<sup>®</sup> MULTIPURPOSE PUMP

The VERSAX<sup>®</sup> is a multipurpose self-priming pump. This unit is driven by a 6 HP or 9 HP Honda engine. This workhorse can be used as a portable pump or on a slip-on unit. Its compact design makes it ideal for a variety of applications such as firefighting, tank filling, water transfers and ATV slip-ons.



\*Product and specifications are subject to change without notice.  
\*All pictures shown are for illustration purpose only, actual product may vary due to product enhancement.





# MARK-3<sup>®</sup> WATSON EDITION

THE NEXT GENERATION  
MARK-3<sup>®</sup> FIRE PUMP





# The Next Generation MARK-3® Fire Pump

The **MARK-3**® lightweight portable fire pump has been moving water for forestry agencies around the world since 1964.

It quickly became the gold standard for performance, reliability and durability in wildland firefighting operations.

To improve the **MARK-3**® pump and update it for the challenges of modern-day wildland firefighting, WATERAX sought the feedback of wildland firefighters.

They challenged WATERAX to cut down size and weight without sacrificing performance and reliability.

While maintaining the iconic look of the classic **MARK-3**® pump, the all-new **MARK-3**® **Watson Edition** is an entirely new platform that boasts exciting modernized features including the firstever purpose-built engine for a wildland pump.



20% 30% 100%  
SMALLER LIGHTER MARK-3®

\*Product and specifications are subject to change without notice.  
\*All pictures shown are for illustration purpose only, actual product may vary due to product enhancement.



# A Modern Pump for the Modern Firefighter

Maintaining the tradition while moving technology forward: the **MARK-3® Watson Edition** plugs right into your existing **MARK-3®** water-moving systems. It will set a new benchmark of excellence for high-pressure fire pumps in the wildland firefighting community for generations to come. The **MARK-3® Watson Edition** greatly improves user experience in the following areas:

## Mobility

*Unit is 30% lighter and 20% smaller.*

- Integrated carriage system
- Easy loading / unloading
- Option to backpack engine side up or down
- Integrated carry handle

## Safety

*Pump design and features to improve firefighter safety.*

- Ergonomic carriage system reduces the risk of back injuries
- Padded straps protect shoulders and back from bruising
- Muffler heat shield protects against severe burns
- Lighter pump reduces incidence and severity of slips, trips, falls and transport-related injuries

## User-friendliness

*Smart, intuitive and easy to use.*

- LED visual interface
- Engine operating status
- Troubleshooting function
- High temperature protection

## Ease of start

*Starting a MARK-3® pump has never been this easy!*

- Less force required for easier pull start
- Foothold for improved steadiness
- Engine warm-up indicator
- Anti-flooding feature reduces risk of flooding engine







#### **4-Stage High-Pressure Pump End**

*Same Performance, Less Weight, More Compact*

- 30% smaller impellers
- 50% reduction in pump end weight
- Optimized hydraulic efficiency
- Corrosion-free composite material



#### **High-Performance Engine**

*Smaller, Quieter, More Powerful*

- Unmatched power-to-weight ratio
- Purpose-built
- More power, 30% lighter
- Perfectly optimized for smaller pump end

#### **Modern User Interface**

*Smart and Intuitive*

- Maintenance indicator
- Fuel depletion indicator
- Engine warm-up indicator
- Loss of prime protection (overspeed)
- High temperature protection (overheat)
- USB port for advanced diagnostics
- Bluetooth® connectivity



**LIGHT. SMART. POWERFUL**

Learn more about the next generation  
MARK-3® fire pump at [watson.waterax.com](https://watson.waterax.com)

\*Product and specifications are subject to change without notice.

\*All pictures shown are for illustration purpose only, actual product may vary due to product enhancement.

**WATERAX**   
**WE MOVE WATER**





# MARK-3<sup>®</sup>

PORTABLE  
HIGH-PRESSURE  
FIRE PUMP



# MARK-3<sup>®</sup>

## PORTABLE HIGH-PRESSURE FIRE PUMP



Launched in 1964, the MARK-3<sup>®</sup> lightweight portable pump has been the pump of choice for most wildland fire agencies around the world for decades. Backed by its proven record, the MARK-3<sup>®</sup> pump today is known for high performance, reliability and durability. Its consistent high-pressure output, ability to pump in tandem or series, and toughness to withstand the rigours of firefighting have made the MARK-3<sup>®</sup> the core of most remote water-delivery systems in wildland fire suppression. Following a series of improvements in 2015, today the MARK-3<sup>®</sup> gives new meaning to durability and reliability.

The upgraded version requalified under the USDA Forest Service 100-hour endurance test in San Dimas on 08/04/15 and has been requalified under QPL Number 5100-274.

### AVAILABLE WITH CONFIGURATIONS THAT INCLUDE:

- Fuel tank
- Quick-connect adaptor
- Suction protector

### APPLICATIONS

- Direct attack wildfire operations
- Relay tank pumping for remote watering during firefighting operations
- High-elevation firefighting in mountainous areas
- In series pumping over long distances
- Parallel pumping for higher volumes

### FEATURES AND BENEFITS

- Quick-release clamp and detachable pump end for minimal equipment downtime
- Unique blister resistant mechanical rotary seal to prolong pump end longevity
- Sealed bearing to eliminate pump end greasing in the field
- Aluminum alloy pump components and anodized parts for lighter weight and greater resistance to corrosion

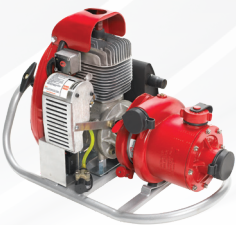
ITEM NO.	MODEL NO.	DESCRIPTION
100137	MARK-3W	MARK-3 <sup>®</sup> Watson Edition
100099	MK3-QS	The MARK-3 <sup>®</sup> -QS model includes quick-connect discharge adaptors and suction-thread protection.
100102	MK3-TQS	The MARK-3 <sup>®</sup> -TQS model includes a fuel tank, quick-connect discharge adaptors and suction-thread protection.
100105	MK3-U	The MARK-3 <sup>®</sup> -U model includes the SAE 45 fuel connector.

## MARK-3<sup>®</sup>

### HIGH-PRESSURE FIRE PUMP

When fires occur in remote locations such as wildland forests and mountainous regions, you need a lightweight, robust and compact portable pump, which will allow you to relocate quickly while minimizing fatigue. The MARK-3<sup>®</sup>, with its unmatched power-to-weight ratio and two-stroke engine, is your ideal solution.

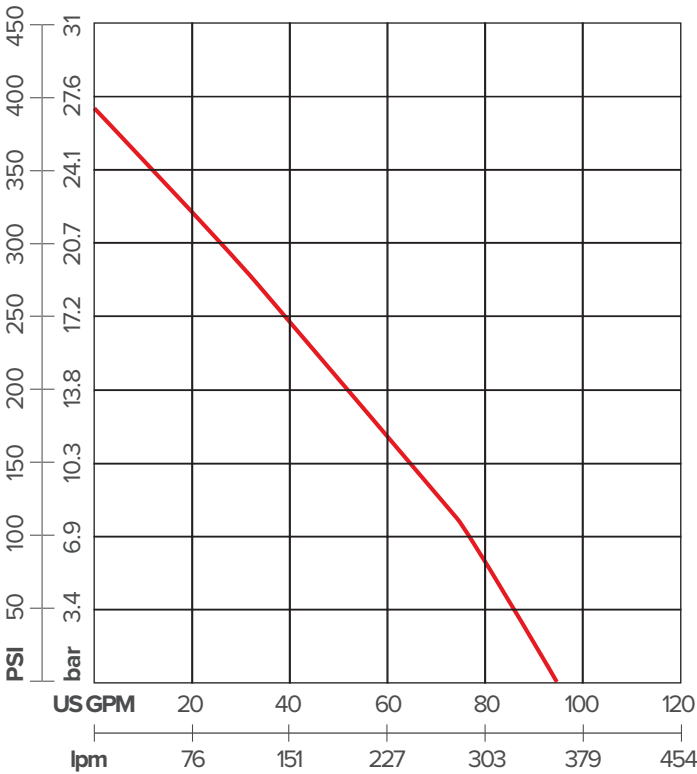
WATERAX acquired the intellectual property and the rights to manufacture the long-lasting 185cc from ROTAX<sup>®</sup>. We invested heavily in new tooling and major improvements on key engine components in order to make the 185cc engine lighter and more durable.



**MARK-3<sup>®</sup>**  
Portable High-Pressure  
Fire Pump

The WATERAX 185cc engine features the following enhancements:

- Nikasil-coated cylinder
- Impregnated crankcase
- Composite cooling fan
- Longer recoil rope



■ MARK-3

## MARK-3<sup>®</sup>



Engine brand: WATERAX 185cc  
Engine type: Gas 2-Stroke

**Flow rate at specified pressure**  
Maximum pressure: **380 PSI** (26.2 bar)  
Free flow: **98 US GPM** (371 lpm)  
Maximum head: **878'** (268 m)  
Weight: **58 lbs** (27 kg)

Flow Rate			Pressure	
US GPM	(lpm)	@	PSI	(bar)
78	(295)	@	100	(6.9)
65	(246)	@	150	(10.3)
38	(144)	@	250	(17.2)

## MARK-3<sup>®</sup> PUMP CARRYING PACK

ITEM NO. 250117

The C-7404 is a carrying pack designed to transport the MARK-3<sup>®</sup> fire pump. It features adjustable nylon straps and also serves as an effective resting surface for operating the pump on the terrain.



\*Product and specifications are subject to change without notice.  
\*All pictures shown are for illustration purpose only, actual product may vary due to product enhancement.



A detailed close-up of a BB-4 high-pressure portable fire pump. The pump is primarily red with a silver-colored engine block. A metal safety cage is mounted over the engine. A black fuel tank is visible on top. A red fire hose is connected to the pump's outlet. The background shows a red fire truck with yellow and white stripes.

# BB-4<sup>®</sup>

HIGH-PRESSURE  
PORTABLE FIRE PUMP



# BB-4<sup>®</sup>

## HIGH-PRESSURE PORTABLE FIRE PUMP



The BB-4<sup>®</sup> is a high-pressure centrifugal pump that has been used by forestry agencies to combat wildfires for over 40 years. It has been the weapon of choice in many wildland operations and is especially suited for type 6 brush trucks. Available in portable and vehicle-mounted configurations, the BB-4<sup>®</sup> pump generates the high pressure required to overcome challenges that arise in difficult terrain. A unique feature of the BB-4<sup>®</sup> pump is the quick-release pump head that is interchangeable with the MARK-3<sup>®</sup>. This greatly reduces spare part inventories and allows for quick infield swap outs.

### AVAILABLE IN DIFFERENT CONFIGURATIONS:

- Portable
- Vehicle-mounted
- Horizontal and vertical drive orientation
- Engine-mount control panel
- Fuel tank
- Exhaust primer

### APPLICATIONS

- Direct attack wildfire operations
- Slip-on units
- Relay tank pumping for remote watering during firefighting operations
- High-elevation firefighting in mountainous areas
- In series pumping over long distances
- Parallel pumping for higher volumes

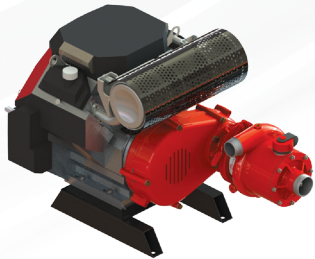
### FEATURES AND BENEFITS

- MARK-3<sup>®</sup> compatible quick-release clamp and detachable pump end for minimal equipment downtime and inventory
- Unique blister resistant mechanical rotary seal to prolong pump end longevity
- Sealed bearing to eliminate pump end greasing in the field
- Drive assembly for reliable, low maintenance performance
- Aluminum alloy pump components and anodized parts for lighter weight and greater resistance to corrosion
- Multiple engine types available
- Choice of manual, electric or exhaust priming
- Fastwire included on all vehicle-mounted units
- EPA certified

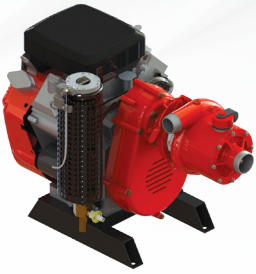
ITEM NO.	MODEL NO.	DESCRIPTION
100018	BB-4 <sup>®</sup> -23PXTC	The BB-4 <sup>®</sup> -23PXTC is configured with a 23 HP Briggs & Stratton engine, vertical-drive unit, portable carry frame, exhaust primer, fuel tank and control panel.
100027	BB-4 <sup>®</sup> -23VX	This BB-4 <sup>®</sup> -23VX unit is configured for vehicle mounting with a 23 HP Briggs & Stratton engine, vertical-drive unit, base mount, FastWire 8-pin control cable, and remote exhaust primer with a control cable.
100028	BB-4 <sup>®</sup> -23V	The BB-4 <sup>®</sup> -23V configuration is ready for vehicle mounting with a 23 HP Briggs & Stratton engine, vertical drive unit and FastWire cable 8-pin connector
100032	BB-4 <sup>®</sup> -21H	The BB-4 <sup>®</sup> -21H model is designed with a 21 HP Honda engine with a vehicle-base mount, horizontal-drive unit, FastWire cable with 8-pin connection, and remote-mount control panel.
100034	BB-4 <sup>®</sup> -18PTC	The BB-4 <sup>®</sup> -18PTC is powered by an 18 HP Briggs & Stratton engine with a vertical-drive unit, portable carry frame, fuel tank and engine-mount control panel.
100025	BB-4 <sup>®</sup> -18V	The BB-4 <sup>®</sup> -18V is configured for vehicle mounting with an 18 HP Briggs & Stratton engine, vertical-drive unit, FastWire cable with 8-pin connector, and remote-mount control panel.
100134	BB-4 <sup>®</sup> -23PX	The BB-4 <sup>®</sup> -23PX is powered by a 23 HP Briggs & Stratton engine configured with a portable frame and exhaust primer.



Portable



Vehicle-Mount Horizontal Drive



Vehicle-Mount Vertical Drive

### BB-4-18P



Engine brand: Briggs & Stratton Vanguard  
Engine type: Gas 4-Stroke

**Flow rate at specified pressure**  
Maximum pressure: **440 PSI** (30.3 bar)  
Free flow: **104 US GPM** (394 lpm)  
Maximum head: **1015'** (309 m)  
Weight: **153 lbs** (69 kg) – **194 lbs** (88 kg)

Flow Rate			Pressure	
US GPM	(lpm)		PSI	(bar)
99	(375)	@	150	(10.3)
80	(303)	@	250	(17.2)
49	(185)	@	350	(24.1)

### BB-4-21H



Engine brand: Honda GX630  
Engine type: Gas 4-Stroke

**Flow rate at specified pressure**  
Maximum pressure: **440 PSI** (30.3 bar)  
Free flow: **106 US GPM** (401 lpm)  
Maximum head: **1015'** (309 m)  
Weight: **169 lbs** (77 kg)

Flow Rate			Pressure	
US GPM	(lpm)		PSI	(bar)
105	(397)	@	150	(10.3)
94	(356)	@	250	(17.2)
65	(246)	@	350	(24.1)

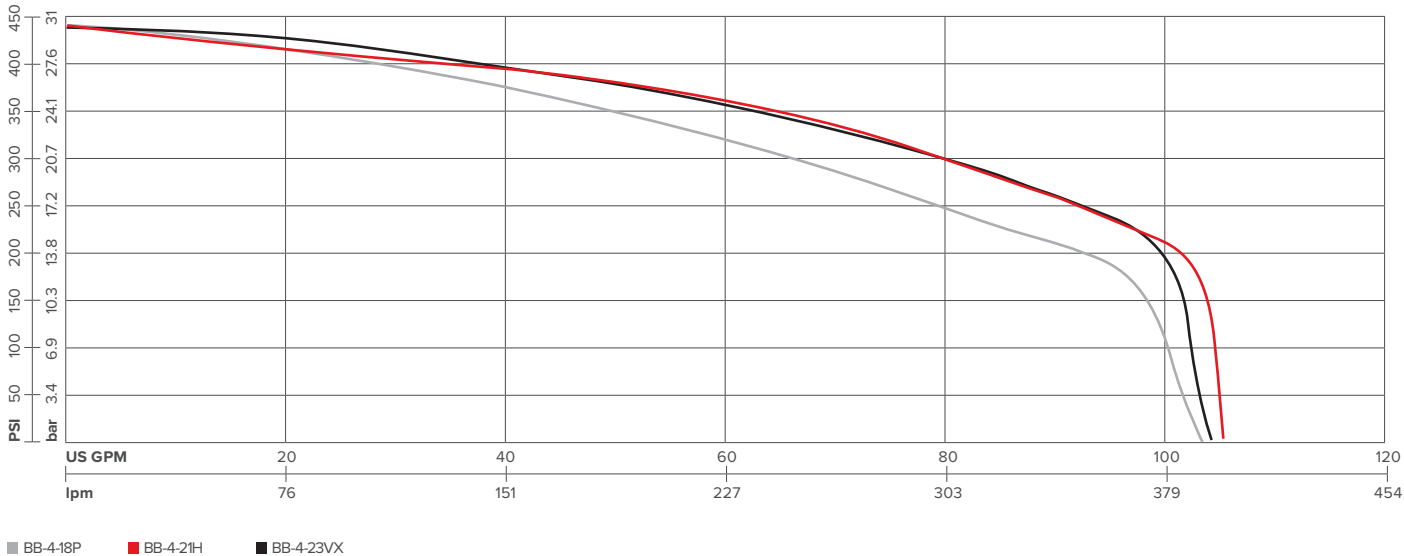
### BB-4-23VX



Engine brand: Briggs & Stratton Vanguard  
Engine type: Gas 4-Stroke

**Flow rate at specified pressure**  
Maximum pressure: **440 PSI** (30.3 bar)  
Free flow: **106 US GPM** (401 lpm)  
Maximum head: **1015'** (309 m)  
Weight: **154 lbs** (70 kg) – **194** (88 kg)

Flow Rate			Pressure	
US GPM	(lpm)		PSI	(bar)
103	(390)	@	150	(10.3)
94	(356)	@	250	(17.2)
65	(246)	@	350	(24.1)



\*Product and specifications are subject to change without notice.  
\*All pictures shown are for illustration purpose only, actual product may vary due to product enhancement.



# BB-4<sup>®</sup>

## HIGH-PRESSURE FIRE PUMP DIESEL



The BB-4<sup>®</sup> diesel high-pressure fire pump pairs the proven WATERAX 4-stage high-pressure pump end with a powerful Kubota D902 25 HP diesel engine. Compatible with type 4, type 5, type 6 brush trucks and listed on the USFS type 6 Fire Apparatus specifications, the diesel BB-4<sup>®</sup> pump is suited to operate in a variety of fire operations. This unit is optimal for direct attack, remote watering, sprinkler systems and is popular for slip-on units.

### AVAILABLE IN DIFFERENT CONFIGURATIONS:

- Horizontal and vertical drive orientation

### APPLICATIONS

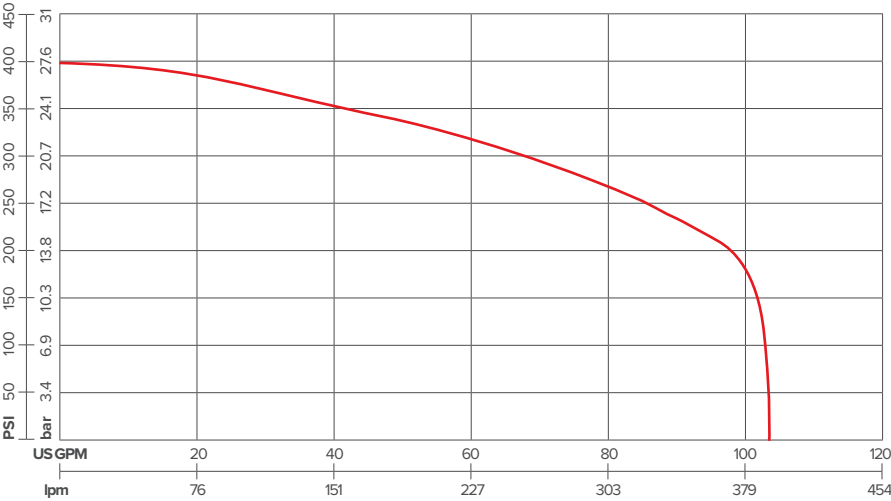
- Brush trucks
- Attack line firefighting
- Long hose lay for remote watering during firefighting operations
- High-elevation firefighting in mountainous areas
- High pressure provides accuracy in flow trajectory
- In series pumping over long distances
- Parallel pumping for higher volumes

### FEATURES AND BENEFITS

- 4-stage pump end compatible with MARK-3<sup>®</sup> pump for in-field exchanges
- Quick-release clamp for minimal equipment downtime
- Sealed bearing to eliminate pump end greasing in the field
- Belt drive system for reliable, low maintenance performance
- Aluminum alloy pump components and anodized parts for lighter weight and greater resistance to corrosion
- EPA certified

## BB-4-D902

This high-pressure fire pump has been used by forest agencies in Type 6 brush trucks for over 40 years. The BB-4<sup>®</sup> Diesel comes in a vertical pump drive mount as standard, with a horizontal-drive mount optional. It is powered by the Kubota D902 Super Mini-Series 3-cylinder liquid-cooled diesel engine.



### D902-E4B



Engine brand: Kubota D902-E4B  
Engine type: Diesel

**Flow rate at specified pressure**  
Maximum pressure: **395 PSI** (27.2 bar)  
Free flow: **106 US GPM** (401 lpm)  
Maximum head: **911'** (278 m)  
Weight: **280 lbs** (127 kg)

Flow Rate			Pressure	
US GPM	(lpm)	@	PSI	(bar)
103	(390)	@	150	(10.3)
95	(360)	@	250	(17.2)
55	(208)	@	350	(24.1)

ITEM NO.	MODEL NO.	DESCRIPTION
100095	BB-4 <sup>®</sup> -D902V	The BB-4 <sup>®</sup> -D902V is standardly configured with a vertical-drive unit and FastWire cable with 14-pin connectors. Optional features include: electronic primer, rain cap, forestry-spark arrestor, and remote mount control panel.
100097	BB-4 <sup>®</sup> -D902H	The BB-4 <sup>®</sup> -D902H is standardly configured with a horizontal-drive unit and FastWire cable with 14-pin connectors. Optional features include: electronic primer, rain cap, forestry-spark arrestor, and remote mount control panel.

\*Product and specifications are subject to change without notice.  
\*All pictures shown are for illustration purpose only, actual product may vary due to product enhancement.



# ON THE ROAD WITH WATSON!

REQUEST A DEMO

Request a demo at  
[watson.waterax.com](http://watson.waterax.com)







# B2X<sup>TM</sup>

MID-RANGE PORTABLE  
FIRE PUMP



B2X™

MID-RANGE PORTABLE  
FIRE PUMP



The B2X pump is a mid-range fire pump, available in vehicle-mounted and portable configurations, dedicated to wildland and urban interface operations. The various models are powered by choice of Briggs and Stratton Vanguard or Honda 4-stroke engines. Combining both pressure and volume, it is ideal for dual attack line operations, remote water transfer and structure protection. The B2X delivers the best performance of its class with minimal operating costs. Unlike other pumps, the B2X uses a low maintenance drive-belt system that provides efficient and dependable performance.

ITEM NO.	MODEL NO.	DESCRIPTION
100073	B2X-23PXTC	The B2X-23PXTC is powered by a 23 HP Briggs & Stratton engine and configured on a carry frame with an exhaust primer, fuel tank, discharge gauge and engine-mount control panel.
100072	B2X-23V	The B2X-23V is powered by a 23 HP Briggs & Stratton engine and configured with a vehicle-base mount, 8-pin FastWire connections and vertical-drive unit.
100067	B2X-21H	The B2X-21H is powered by a 21 HP Honda engine and configured with a base mount for vehicle use, 8-pin FastWire connections and a horizontal-drive unit.
100070	B2X-18PTC	The B2X-18PTC is powered by an 18 HP Briggs & Stratton engine configured on a portable carry frame with a vertical-drive unit, a fuel tank and control panel.
100071	B2X-18VX	The B2X-18VX is powered by an 18 HP Briggs & Stratton engine with a vertically-mounted drive unit and configured with a vehicle base mount, exhaust primer and 8-pin FastWire connections.
100064	B2X-23PC	The B2X-23PC is powered by a 23 HP Briggs & Stratton engine in a portable configuration with a vertical-drive unit and engine-mount control panel.

AVAILABLE IN DIFFERENT CONFIGURATIONS:

- Portable
- Vehicle-mounted
- Horizontal and vertical drive orientations
- Engine-mount control panel
- Fuel tank
- Exhaust primer

APPLICATIONS

- Interface wildfire operations
- Vehicle-mounted applications
- Brush trucks
- Initial attack units
- Slip-on units
- Structure protection
- Water transfer
- Boat fire pump
- Simultaneous attack lines

FEATURES AND BENEFITS

- Quick-release clamp and detachable pump end for ease of maintenance and minimal equipment downtime
- Unique blister resistant mechanical rotary seal to prolong pump end longevity
- Sealed bearing to eliminate pump end greasing in the field
- Drive assembly for reliable, low maintenance performance
- Aluminum alloy pump components and anodized parts for lighter weight and greater resistance to corrosion
- Fastwire included on all vehicle-mounted units
- EPA certified



B2X-18P



Engine brand: Briggs & Stratton Vanguard  
Engine type: Gas 4-Stroke

**Flow rate at specified pressure**  
Maximum pressure: **190 PSI** (13.1 bar)  
Free flow: **300 US GPM** (1136 lpm)  
Maximum head: **438'** (134 m)  
Weight: **153 lbs** (69 kg) – **194 lbs** (88 kg)

Flow Rate		Pressure		
US GPM	(lpm)	@	PSI	(bar)
255	(965)	@	50	(3.4)
155	(587)	@	100	(6.9)
65	(246)	@	150	(10.3)

B2X-21H



Engine brand: Honda GX630  
Engine type: Gas 4-Stroke

**Flow rate at specified pressure**  
Maximum pressure: **200 PSI** (13.8 bar)  
Free flow: **300 US GPM** (1136 lpm)  
Maximum head: **461'** (141 m)  
Weight: **169 lbs** (77 kg)

Flow Rate		Pressure		
US GPM	(lpm)	@	PSI	(bar)
275	(1041)	@	50	(3.4)
215	(814)	@	100	(6.9)
112	(424)	@	150	(10.3)

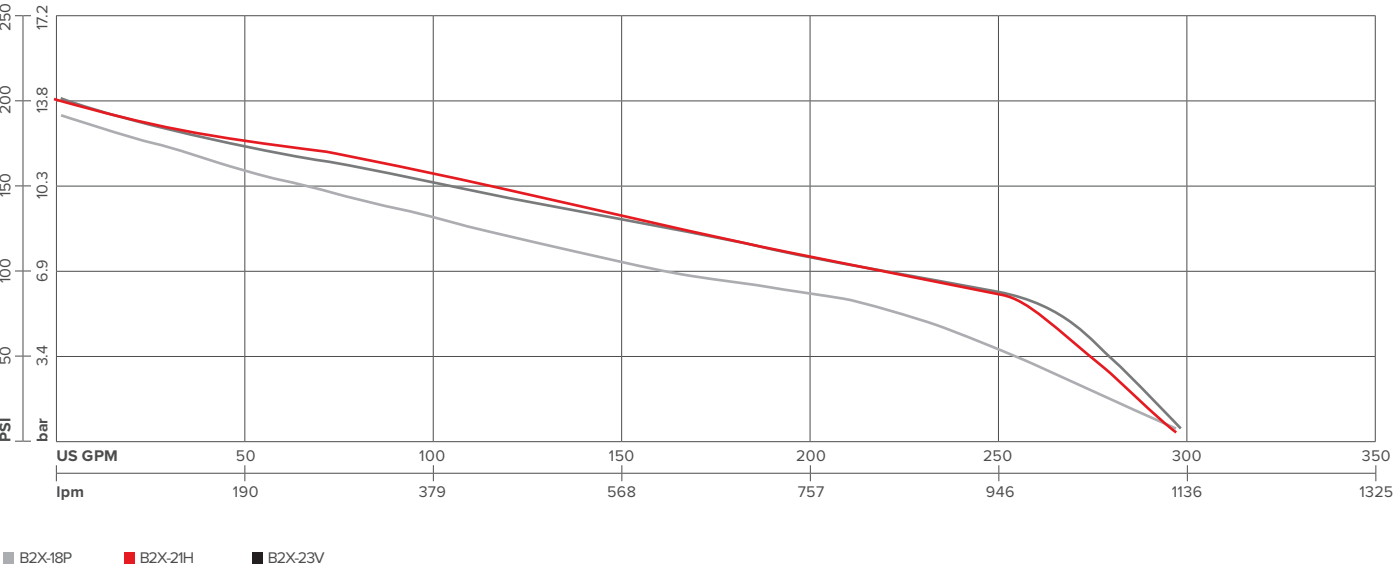
B2X-23V



Engine brand: Briggs & Stratton Vanguard  
Engine type: Gas 4-Stroke

**Flow rate at specified pressure**  
Maximum pressure: **200 PSI** (13.8 bar)  
Free flow: **300 US GPM** (1136 lpm)  
Maximum head: **461'** (141 m)  
Weight: **157 lbs** (71 kg) – **194 lbs** (88 kg)

Flow Rate		Pressure		
US GPM	(lpm)	@	PSI	(bar)
285	(1079)	@	50	(3.4)
215	(814)	@	100	(6.9)
100	(379)	@	150	(10.3)



\*Product and specifications are subject to change without notice.  
\*All pictures shown are for illustration purpose only, actual product may vary due to product enhancement.



# B2X™

## MID-RANGE PUMP DIESEL



The B2X-D902 diesel unit is a mid-range fire pump ideal for brush trucks used in wildland and urban interface operations. A strong show of both pressure and volume makes it the ideal pump for vehicle-mounted applications dedicated to municipal operations and in wildland urban interface areas. The WATERAX quick-release clamp provided on the B2X pump provides easy maintenance without the need to disassemble the complete pump unit, which significantly reduces equipment downtime.

### AVAILABLE IN DIFFERENT CONFIGURATIONS:

- Horizontal and vertical drive orientation

### APPLICATIONS

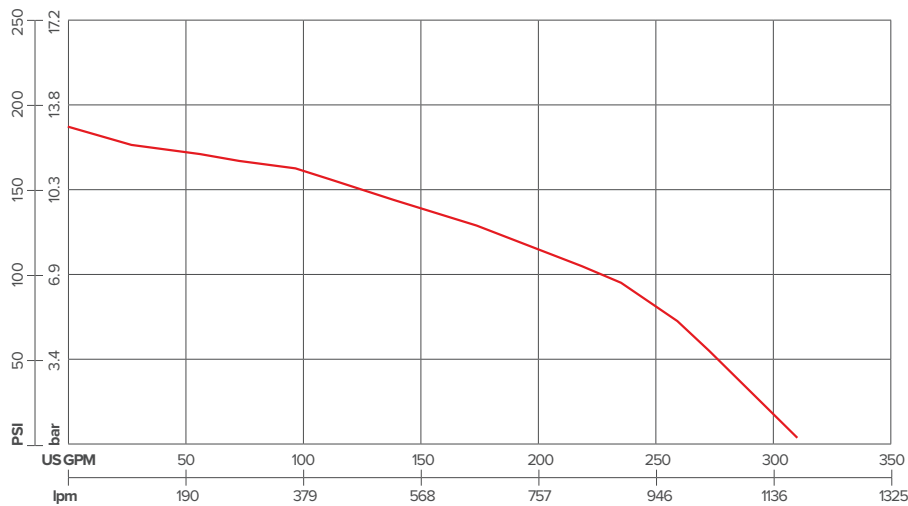
- Vehicle-mounted applications
- Brush trucks
- Initial attack units
- Slip-on units
- 2 x 1-1/2" simultaneous attack lines
- Structure protection
- Water transfer
- Boat fire pump

### FEATURES AND BENEFITS

- Detachable pump end for ease of maintenance
- Drive-belt system for reliable, low maintenance performance
- Aluminum alloy pump components and anodized parts for lighter weight and greater resistance to corrosion
- EPA certified

## B2X-D902

The B2X™ Diesel comes in a vertical pump drive mount as standard with a horizontal drive mount optional. It is powered by the Kubota D902 Super Mini-Series 3-cylinder liquid cooled diesel engine.



### D902-E4B



Engine brand: Kubota D902-E4B  
Engine type: Diesel

**Flow rate at specified pressure**  
Maximum pressure: **180 PSI** (12.4 bar)  
Free flow: **310 US GPM** (1173 lpm)  
Maximum head: **415'** (127 m)  
Weight: **280 lbs** (127 kg)

Flow Rate			Pressure	
US GPM	(lpm)	@	PSI	(bar)
274	(1037)	@	50	(3.4)
220	(833)	@	100	(6.9)
112	(424)	@	150	(10.3)

ITEM NO.	MODEL NO.	DESCRIPTION
100096	B2X-D902V	The B2X-D902V is powered by a Kubota diesel engine with a vertical-drive unit and leg mounts ready for vehicle mounting.
100098	B2X-D902H	The B2X-D902H is powered by a Kubota diesel engine with a horizontal-drive unit and leg mounts ready for vehicle mounting.

\*Product and specifications are subject to change without notice.

\*All pictures shown are for illustration purpose only, actual product may vary due to product enhancement.

### MORE IN IT FOR YOU

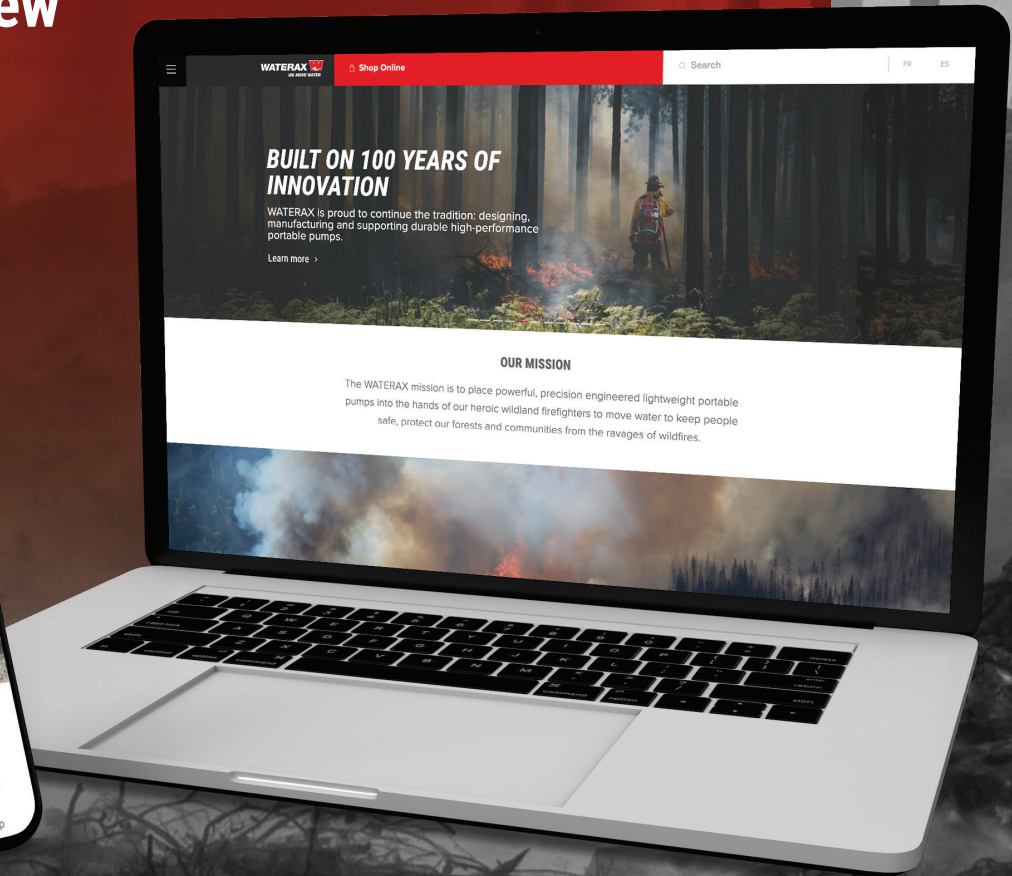
# YOU'LL BE PUMPED ABOUT OUR NEW WEB SITE!

**A fresh new look. Easier to navigate. Mobile friendly.**

With its practical pump selector and other new features, our new site is an information tool that makes product research and procurement easier for you! Even our [e-store](#) got a makeover!

Plus interactive maps for finding dealers and repair centers, everything to make your WATERAX experience even smoother.

## Explore the new waterax.com!



**WATERAX**   
**WE MOVE WATER**



A dramatic photograph of a forest fire. In the background, tall, thin trees stand against a bright, hazy sky where the sun is visible through the canopy. The foreground is filled with thick, dark smoke rising from the ground. Interspersed within the smoke are patches of bright orange and yellow flames, primarily concentrated on the ground and among low-lying, dry brush and branches. The overall atmosphere is one of intense heat and danger.

# STRIKER<sup>®</sup>

HIGH-PRESSURE  
PORTABLE FIRE PUMP



# STRIKER®

## HIGH-PRESSURE PORTABLE FIRE PUMP

STRIKER® high-pressure pumps pair a Honda 4-stroke engine with either 2 or 3 stage WATERAX pump end. Applications include skid units, cabin protection and snowmaking. They share common parts with the MARK-3® and BB-4® pumps and are renowned for the same durability and reliability.

### APPLICATIONS

- Direct attack firefighting operations
- Long hose lay for remote watering during firefighting operations
- High-elevation firefighting in mountainous areas
- In series pumping over long distances
- Parallel pumping for higher volumes
- Slip-on units
- Snowmaking

### FEATURES AND BENEFITS

- Quick-release clamp and detachable pump end for minimal equipment downtime and inventory
- Unique blister resistant mechanical rotary seal to prolong pump end longevity
- Sealed bearing to eliminate pump end greasing in the field
- Drive-belt system for reliable, low maintenance performance
- Aluminum alloy pump components and anodized parts for lighter weight and greater resistance to corrosion
- Fastwire included on all vehicle-mounted units
- EPA certified



### STRIKER II® HIGH-PRESSURE 2-STAGE FIRE PUMP

The WATERAX STRIKER II®, pairs a reliable 2-stage pump end with a Honda 4-stroke engine. It can be used by itself, in tandem or in parallel with other WATERAX pumps. It is also a very popular choice for slip-on applications.

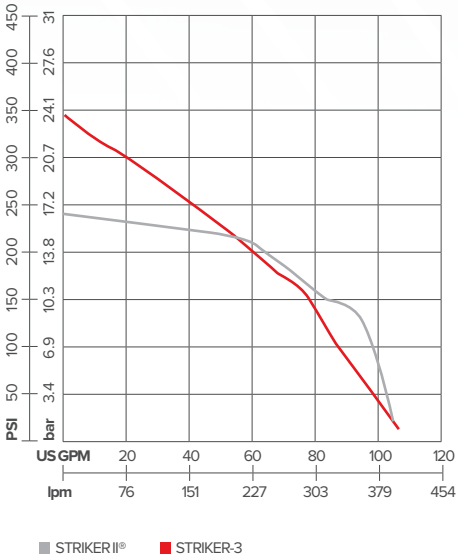
Portable



### STRIKER-3 HIGH-PRESSURE 3-STAGE FIRE PUMP

The WATERAX STRIKER-3 also known as ULTRAstriker® provides additional pressure useful to overcome longer distance and elevation. It can be used by itself, in tandem or in parallel with other WATERAX pumps.

Vehicle-Mount



#### STRIKER II®



Engine brand: Honda, GX390 Series  
Engine type: Gas 4-Stroke

**Flow rate at specified pressure**  
Maximum pressure: **230 PSI** (15.9 bar)  
Free flow: **105 US GPM** (397 lpm)  
Maximum head: **531'** (162 m)  
Weight: **128 lbs** (58 kg)

Flow Rate			Pressure	
US GPM	(lpm)	@	PSI	(bar)
97	(367)	@	100	(6.9)
79	(299)	@	150	(10.3)
58	(220)	@	200	(13.8)

#### STRIKER-3



Engine brand: Honda, GX390 Series  
Engine type: Gas 4-Stroke

**Flow rate at specified pressure**  
Maximum pressure: **345 PSI** (23.8 bar)  
Free flow: **102 US GPM** (386 lpm)  
Maximum head: **796'** (243 m)  
Weight: **128 lbs** (58 kg)

Flow Rate			Pressure	
US GPM	(lpm)	@	PSI	(bar)
87	(329)	@	100	(6.9)
75	(284)	@	150	(10.3)
38	(144)	@	250	(17.2)

ITEM NO.	MODEL NO.	DESCRIPTION
100046	STR2-13P	The STRIKER-II®-13P configuration is powered by a Honda 13 HP engine and vertical-drive unit in a portable configuration with carry frame, hand primer and check valve.
100045	STR2-13V	The STRIKER-II®-13V configuration is powered by a Honda 13 HP engine and vertical-drive unit in a vehicle mount configuration with a base mount and 8-pin FastWire connections.
100049	STR3-13P	This STRIKER-3-13P is powered by a 13 HP Honda engine and vertical-drive unit in a portable configuration with a carry frame, fuel tank, hand primer and check valve.
100047	STR3-13V	The STRIKER-II®-13V configuration is powered by a Honda 13 HP engine and vertical-drive unit in a vehicle mount configuration with a base mount and 8-pin FastWire connections.
100048	STR3-13S	The STRIKER-3-13S is powered by a 13 HP Honda engine and vertical-drive unit in a portable configuration with a carry frame.
100127	STR2-13VS	The STRIKER-II®-13VS is powered by a 13 HP Honda engine and vertical-drive unit and configured for vehicle mounting with a base mount, hand primer and check valve.

\*Product and specifications are subject to change without notice.  
\*All pictures shown are for illustration purpose only, actual product may vary due to product enhancement.



A firefighter in a yellow jacket and helmet is shown from the side, carrying a Mini-Striker fire pump on their back. The pump is red and black, with a visible engine and hose. The firefighter is also holding a wooden-handled axe. The background is a blurred forest scene.

# MINI-STRIKER<sup>®</sup>

LIGHTWEIGHT  
HIGH-PRESSURE  
FIRE PUMP



# MINI-STRIKER®

## LIGHTWEIGHT HIGH-PRESSURE FIRE PUMP

The MINI-STRIKER® is a portable and lightweight pump that is well suited for initial attack operations and is a very popular choice for entry level skid applications. The MINI-STRIKER® fire pump combines a single-stage pump end powered by a reliable Honda 4-stroke 2.5 HP engine to generate class leading performance.

### APPLICATIONS

- Initial attack firefighting
- Sprinkler operations
- Entry level slip-on units
- Cottage protection

### FEATURES AND BENEFITS

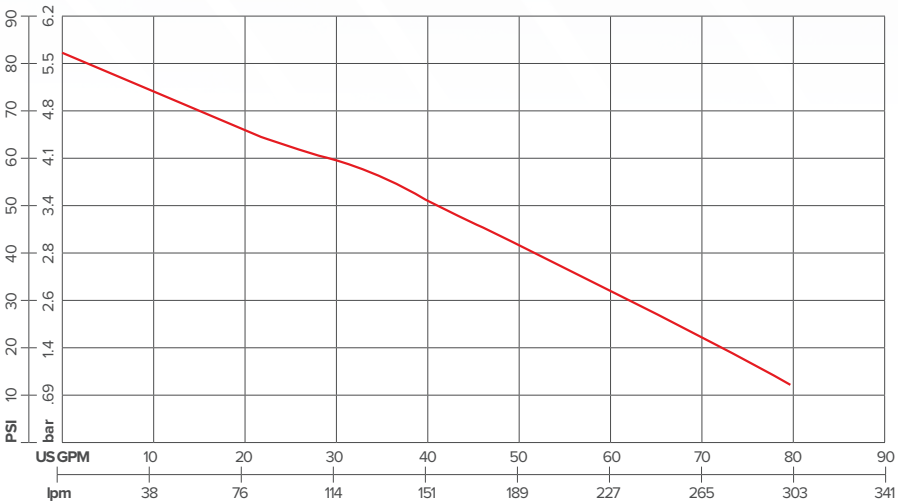
- Lightweight aluminum alloy pump components
- Portable and compact
- Reliable 4-stroke Honda engine
- Robust carrying handle
- Integrated fuel tank
- Optional turnkey cart system



Portable



Vehicle-Mount Configuration



### GXH50

Engine brand: Honda GXH50 Series  
Engine type: Gas 4-stroke

**Flow rate at specified pressure**  
Maximum pressure: **85 PSI** (5.9 bar)  
Free flow: **80 US GPM** (303 lpm)  
Maximum head: **196'** (60 m)  
Weight: **20 lbs** (9 kg) – **103 lbs** (47 kg)

Flow Rate			Pressure	
US GPM	(lpm)		PSI	(bar)
68	(257)	@	25	(1.7)
42	(159)	@	50	(3.4)
12	(45)	@	75	(5.2)

ITEM NO.	MODEL NO.	DESCRIPTION
100053	MSTR-P	The MINI-STRIKER®-P is powered by a 2.5 HP Honda engine and configured to be extremely portable with a carry handle and base frame.
100092	MSTR-V	The MINI-STRIKER®-V is powered by a 2.5 HP Honda engine and configured to be mounted on a vehicle like a small UTV or slip-on unit.

\*Product and specifications are subject to change without notice.  
\*All pictures shown are for illustration purpose only, actual product may vary due to product enhancement.





# VERSAX<sup>®</sup>

MULTIPURPOSE  
PUMP



# VERSAX®

## MULTIPURPOSE PUMP

The VERSAX® is a versatile, rugged and economical twin-impeller self-priming pump powered by a Honda engine. It provides superior water-transfer performance as well as the ability to combat fire from greater distances and points of elevation. The VERSAX® is a multipurpose fire pump that can also be used for other applications such as tank filling, water transfers and as ATV slip-on units.

### APPLICATIONS

- Firefighting
- Tank filling
- High head general water transfer
- Boom spraying
- Irrigation
- ATV slip-ons

### FEATURES AND BENEFITS

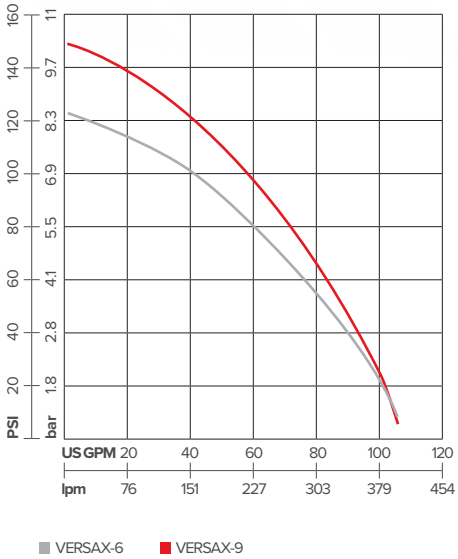
- Twin-impeller design provides additional pressure for longer and higher pumping applications
- Pump casing and diffusers manufactured from quality corrosion-resistant grade aluminum for long life
- Nylon glass fibre reinforced impellers are fully corrosion-proof and lightweight
- Removable discharge and suction ports
- Provide quick access inside the pump volute
- Cost-effective ports replacement in case of damage (e.g. damaged threads)
- 3-way discharge port for easy installation
- Powder-coated casing for added corrosion resistance
- Self-priming for more versatile installation options
- Easy access to drain port
- Low oil protection
- Fastwire™ included on all vehicle-mounted units
- Comprehensive user and service manuals
- EPA certified



Vehicle-Mount



Portable



### VS2-6



Engine brand: Honda GX200 Series  
Engine type: Gas 4-Stroke

**Flow rate at specified pressure**  
Maximum pressure: **120 PSI** (8.3 bar)  
Free flow: **105 US GPM** (397 lpm)  
Maximum head: **277'** (84 m)  
Weight: **56 lbs** (25 kg) – **116 lbs** (53 kg)

Flow Rate			Pressure	
US GPM	(lpm)	@	PSI	(bar)
83	(314)	@	50	(3.4)
63	(238)	@	75	(5.2)
38	(144)	@	100	(6.9)

### VS2-9



Engine brand: Honda GX270 Series  
Engine type: Gas 4-Stroke

**Flow rate at specified pressure**  
Maximum pressure: **150 PSI** (10.3 bar)  
Free flow: **105 US GPM** (397 lpm)  
Maximum head: **347'** (106 m)  
Weight: **79 lbs** (36 kg)

Flow Rate			Pressure	
US GPM	(lpm)	@	PSI	(bar)
92	(348)	@	50	(3.4)
80	(303)	@	75	(5.2)
64	(242)	@	100	(6.9)

ITEM NO.	MODEL NO.	DESCRIPTION
100110	VS2-6W	The VERSAX®-6W is powered by a 6 HP Honda engine in a portable configuration with a wraparound frame.
100093	VS2-6V	The VERSAX®-6V is powered by a 6 HP Honda engine configured for vehicle mounting.
100111	VS2-9W	The VERSAX®-9W is powered by a 9 HP Honda engine configured to be portable with a wraparound frame.
100078	VS2-9EV	The VERSAX®-9EV is powered by a 9 HP Honda engine configured for vehicle mounting, electric start and battery.

\*Product and specifications are subject to change without notice.  
\*All pictures shown are for illustration purpose only, actual product may vary due to product enhancement.



# PUMP OVERVIEW

PUMP	WEIGHT	FUEL	ENGINE	STROKE	PUMP END	STAGE	SUCTION DISCHARGE	MAXIMUM PRESSURE	FREE FLOW	MAXIMUM HEAD	SEGMENT
MARK-3® WATSON EDITION	44 lbs (20 kg)	Gas/Oil 50:1	WATERAX 140 10 HP	2	WATSON	4-Stage	2" NPSH 1.5" NPSH	380 PSI 26.2 bar	100 US GPM 379 lpm	877' 267 m	Backpackable High Pressure
MARK-3®	59 lbs (27 kg)	Gas/Oil 50:1	WATERAX 185 10 HP	2	12-16S	4-Stage	2" NPSH 1.5" NPSH	380 PSI 26.2 bar	98 US GPM 371 lpm	877' 267 m	Backpackable High Pressure
BB-4-18	153 lbs (69 kg)	Gas	B&S Vanguard 18 HP	4	12-16S	4-Stage	2" NPSH 1.5" NPSH	440 PSI 30.3 bar	104 US GPM 394 lpm	1015' 309 m	High Pressure
BB-4-21	169 lbs (77 kg)	Gas	HONDA 21 HP	4	12-16S	4-Stage	2" NPSH 1.5" NPSH	440 PSI 30.3 bar	106 US GPM 401 lpm	1015' 309 m	High Pressure
BB-4-23	157 lbs (71 kg)	Gas	B&S Vanguard 23 HP	4	12-16S	4-Stage	2" NPSH 1.5" NPSH	440 PSI 30.3 bar	106 US GPM 401 lpm	1015' 309 m	High Pressure
BB-4-D902	280 lbs (127 kg)	Diesel	Kubota 25 HP	4	12-16S	4-Stage	2" NPSH 1.5" NPSH	395 PSI 27.2 bar	106 US GPM 401 lpm	911' 278 m	High Pressure
STRIKER-3	129 lbs (59 kg)	Gas	HONDA 12 HP	4	18-16S	3-Stage	2" NPSH 1.5" NPSH	345 PSI 23.8 bar	102 US GPM 386 lpm	796' 243 m	High Pressure
STRIKER II®	127 lbs (58 kg)	Gas	HONDA 12 HP	4	25-16S	2-Stage	2" NPSH 1.5" NPSH	230 PSI 15.9 bar	105 US GPM 397 lpm	531' 162 m	High Pressure
B2X-18	153 lbs (69 kg)	Gas	B&S Vanguard 18 HP	4	B2X	2-Stage	3" NPT / 4" VIC 2.5" NPT / 3" VIC	190 PSI 13.1 bar	300 US GPM 1136 lpm	438' 134 m	Mid-Range
B2X-21	169 lbs (77 kg)	Gas	HONDA 21 HP	4	B2X	2-Stage	3" NPT / 4" VIC 2.5" NPT / 3" VIC	200 PSI 13.8 bar	300 US GPM 1136 lpm	461' 141 m	Mid-Range
B2X-23	157 lbs (71 kg)	Gas	B&S Vanguard 23 HP	4	B2X	2-Stage	3" NPT / 4" VIC 2.5" NPT / 3" VIC	200 PSI 13.8 bar	300 US GPM 1136 lpm	461' 141 m	Mid-Range
B2X-D902	280 lbs (127 kg)	Diesel	Kubota 25 HP	4	B2X	2-Stage	3" NPT / 4" VIC 2.5" NPT / 3" VIC	180 PSI 12.4 bar	310 US GPM 1173 lpm	415' 127 m	Mid-Range
VERSAX®-6	56 lbs (25 kg)	Gas	HONDA 5.5 HP	4	-	2-Stage	2" NPT (2) 1"& (1) 1.5" NPT	120 PSI 8.3 bar	105 US GPM 397 lpm	277' 84 m	Self-Priming Multipurpose
VERSAX®-9	79 lbs (36 kg)	Gas	HONDA 8.5 HP	4	-	2-Stage	2" NPT (2) 1"& (1) 1.5" NPT	150 PSI 10.3 bar	105 US GPM 397 lpm	346' 105 m	Self-Priming Multipurpose
MINI-STRIKER®	20 lbs (9 kg)	Gas	HONDA 2.1 HP	4	-	1-Stage	1.5" NPSH 1.5" NPSH	85 PSI 5.9 bar	80 US GPM 303 lpm	196' 60 m	Lightweight High Pressure

\*Product and specifications are subject to change without notice.  
\*All pictures shown are for illustration purpose only, actual product may vary due to product enhancement.





# HIGH-PRESSURE PUMP ENDS

WATERAX offers of a complete line of high performance pump ends suited to meet the most difficult water handling requirements. The performance and dependability of our pumps come from our superior multi-stage pump end design, patentend in 1958, that provides unrivaled pressure and volume.


- Unique blister-resistant mechanical rotary seal to prolong pump end longevity
- Maintenance-free sealed bearing to avoid the need for greasing the pump end in the field
- Anodized aluminium impellers and pump body which eliminate galvanic corrosion common with bronze impellers

WATERAX high-pressure centrifugal pump ends are offered in 4-stage, 3-stage and 2-stage configurations. They deliver pressure up to 440 PSI (30.3 bar) and flows reaching 310 US GPM (1173 lpm) and are ideal pump ends for moving water over long distances and high elevations.

Visit the WATERAX online store to purchase exclusive genuine spare parts for your multi-stage high-pressure centrifugal pump ends.

Access all related documents, such as support documents, tech notes, data sheets, owner's manuals and educational videos at the WATERAX online store.

**SHOP FOR GENUINE  
SPARE PARTS ONLINE**  
**[shop.waterax.com](http://shop.waterax.com)**

**WATERAX**   
**WE MOVE WATER**





# TOOL KITS & FUEL TANK ACCESSORIES



TOOL KITS

TOOL KIT ENGINE W140

ITEM NO. 702108



TOOL KIT ENGINE W140

ID	ITEM NO	DESCRIPTION	QTY
--	702108	TOOL KIT ENGINE W140	--
1	702105	TOOL FLYWHEEL PULLER W140	1
2	600157	R-938 TOOL BEARING 52MM PULLER CRANKSHAFT	1
3	702134	TOOL PISTON SUPPORT W140	1
4	702119	FIXTURE ASSEMBLY CRANKCASE W140	1
5	702120	TOOL INSTALLER BEARING CRANKSHAFT PTO SIDE W140	1
6	702123	TOOL ROTATION AID CRANKSHAFT W140	1
7	702106	TOOL PISTON LOCKING W140	1
8	701349	TOOL OIL SEAL 20MM CRANKCASE PRESSING	1
9	701350	TOOL OIL SEAL 25MM CRANKCASE PRESSING	1
10	702121	TOOL CRANKCASE PULLER W140	1
11	701863	TOOL GEAR COUPLING SOCKET WATSON	1
12	702122	TOOL ROTATION HOLD CRANKSHAFT W140	1
13	702138	TOOL CRANKSHAFT SUPPORT W140	1
14	702132	TOOL CRANKSHAFT PULLER W140	1
15	702136	TOOL BEARING AND OIL SEAL CRANKSHAFT REMOVAL W140	1
16	702126	TOOL SPANNER RING PISTON W140	1
17	702127	TOOL PROTECTIVE SLEEVE CRANKSHAFT PTO SIDE W140	1
18	702128	TOOL PROTECTIVE SLEEVE CRANKSHAFT MAG SIDE W140	1
19	702124	TOOL FLANGE INTAKE LEAKDOWN W140	1
20	702125	TOOL FLANGE EXHAUST LEAKDOWN W140	1
21	702129	TOOL SPARK PLUG PORT LEAKDOWN W140	1
22	702130	TOOL KNURLED NUT M8 LEAKDOWN W140	2
23	702131	TOOL KNURLED NUT M6 LEAKDOWN W140	2
24	702137	TOOL BEARING PRESSING CRANKSHAFT W140	1

TOOL KIT PUMP END WATSON

ITEM NO. 702114



TOOL KIT PUMP END WATSON

ID	ITEM NO	DESCRIPTION	QTY
--	702114	TOOL KIT PUMP END WATSON	--
1	701865	TOOL DISTRIBUTOR PRESSING PUMP END WATSON	1
2	600079	A-1888 TOOL SUCTION COVER PULLER	1
3	702111	TOOL SEAL SEAT REMOVAL PUMP END WATSON	1
4	701862	TOOL BEARING PRESSING PUMP END WATSON	1
5	701860	FIXTURE ASSEMBLY PUMP END WATSON	1
6	701863	TOOL GEAR COUPLING SOCKET WATSON	1
7	702109	TOOL PRESSING PIN DISASSEMBLY PUMP END WATSON	1
8	701861	TOOL SEAL SEAT PRESSING PUMP END WATSON	1
9	701859	FIXTURE SHAFT ASSEMBLY PUMP END WATSON	1
10	702118	FIXTURE BEARING BUSH. DISASSEMBLY PUMP END WATSON	1
11	701864	FIXTURE BEARING BUSHING PUMP END WATSON	1
12	702113	FIXTURE DISASSEMBLY PUMP END WATSON	1

TOOL INSTALLER UIM BATTERY COVER W140

ITEM NO. 702133



SPECIAL TOOLS WATSON

ID	ITEM NO	DESCRIPTION	QTY
1	702133	TOOL INSTALLER UIM BATTERY COVER W140	1



# TOOL KITS

## A-2356 TOOL KIT FOR WATERAX PUMP ENDS (12-16S, 18-16S, 25-16S)

ITEM NO. 250125



## A-2356 TOOL KIT PUMP END XX-16

ID	ITEM NO	DESCRIPTION	QTY
--	250125	A-2356 TOOL KIT PUMP END XX-16	--
1	700588	A-5297 SUPPORT TOOL	1
2	600078	A-1887 ALUMINUM GUIDE FOR SHAFT INSTALLATION	1
3	600157**	R-938 PULLER, CRANKSHAFT BEARING 1-PIECE	1
4	600175*	R-904L SPARK PLUG WRENCH C/W ROD	1
5	600079	A-1888 TOOL SUCTION COVER PULLER	1
6	600052	B-4084 PUMP BEARING PRESSING SLEEVE	1
7	700531	A-4329 PRESSING SLEEVE - ROTARY SEAL	1
8	700532	A-4097 PROTECTOR-SHAFT	1
9	700642	A-7711 SEAL REMOVAL PRESS TOOL, 12-28N	1
10	700090	A-7644 SEAL PULLER FOR 12-28NS	1
11	700540	A-1884 PRESSING SLEEVE - DISTRIBUTOR	1
12	701345	PRESS PIN REMOVAL TOOL PUMP PARTS DIA .686"	1
13	600077	A-1886 PRESS PIN REMOVAL TOOL PUMP PARTS DIA .925"	1
14	801299	INSTALLER BUSHING BEARING	1
15	600080	A-1890 PRESSING PIN FOR SHAFT REMOVAL, STEEL	1
16	801305	SUPPORT BUSHING BEARING	1

\*600157 now replaces 600123 (B-4085).  
\*\*600175 contains 800084 (R-904) and 800082 (R-905)

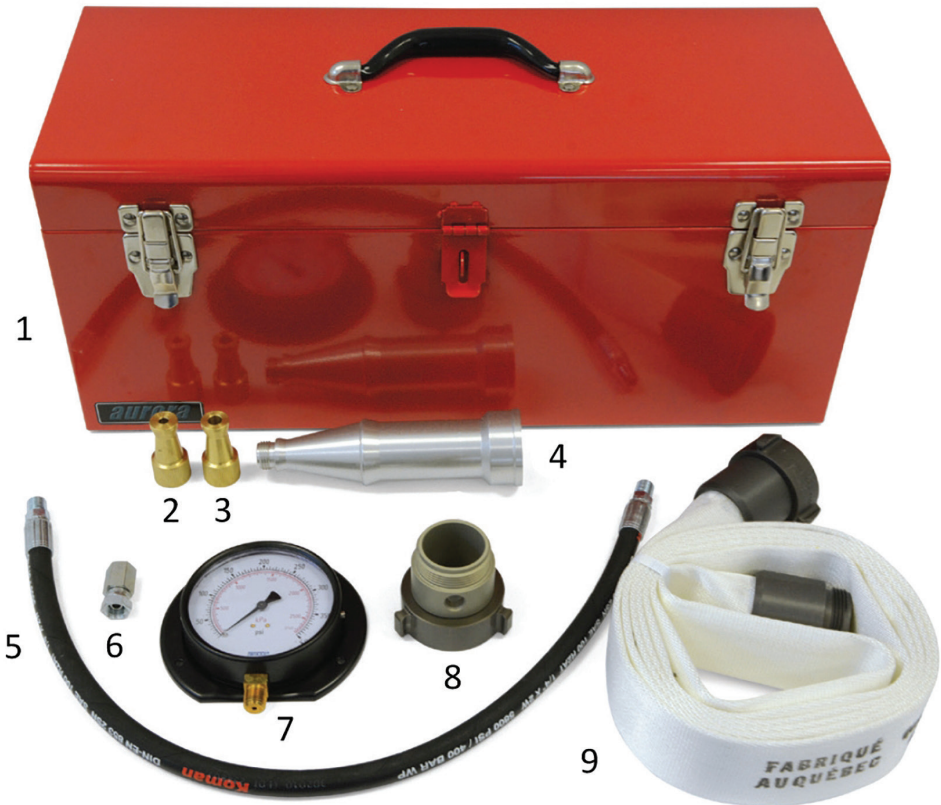
\*Product and specifications are subject to change without notice.

\*All pictures shown are for illustration purpose only, actual product may vary due to product enhancement.

## A-2388 PUMP TEST KIT

ITEM NO. 250137

For testing WATERAX centrifugal high-pressure fire pump units models: MARK-3®, MINI-STRIKER®, VERSAX®, STRIKER II®, STRIKER-3 and BB-4® or other pumps requiring evaluation. Can be purchased separately or as a kit consisting of:



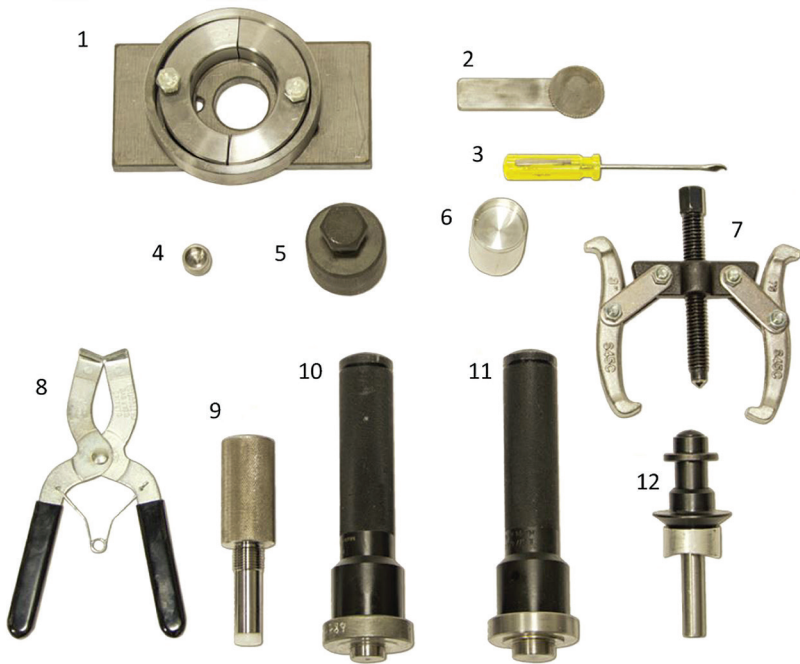
## PUMP TEST KIT

ID	ITEM NO	DESCRIPTION	QTY
--	250137	A-2388 PUMP TEST KIT	--
1	700555	A-2389 TOOL AND ACCESSORY BOX	1
2	700548	A-2395B CALIBRATED NOZZLE TIP 1/4"	1
3	700546	A-2395D CALIBRATED NOZZLE TIP 3/8"	1
4	600427	C-1933 NOZZLE 1-1/2"NPSH, ALU.	1
5	700545	A-2391 RUBBER HOSE ASSEMBLY 27" LG	1
6	700552	A-2391B ADP, FEM NPT - SWIVEL FEM	1
7	700560	A-2392 PRESSURE GAUGE (DRY) 0-400 PSI	1
8	600061	A-2390 PRESSURE GAUGE ADAPTOR 1-1/2" NPSH	1
9	400022	HOSE SPEC 187 1.5 NPSH X 10' CPLG AL	1



TOOL KITS

R-952N TOOL KIT ENGINE W185  
ITEM NO. 250286

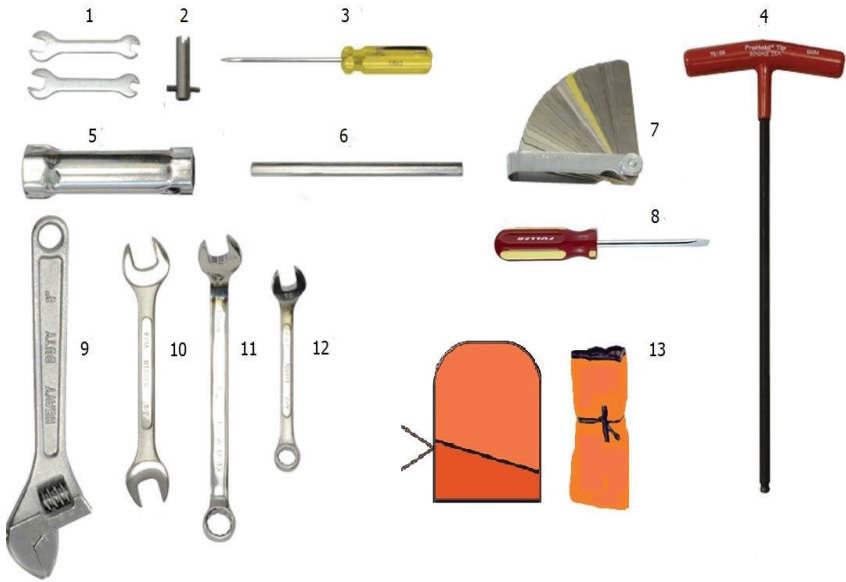


R-952N TOOL KIT ENGINE W185

ID	ITEM NO	DESCRIPTION	QTY
--	250286	R-952N TOOL KIT ENGINE W185	--
1	600157	R-938 TOOL BEARING 52MM PULLER	1
2	600164	R-953 CRANKSHAFT JACK	1
3	701352	CIRCLIP REMOVAL TOOL FOR 185CC	1
4	800080	R-928 PROTECTOR CAP, SHAFT 12MM	1
5	700723	R-927 PULLER - MAGNETO (M38 X 1.5)	1
6	600161	R-933 TOOL OIL SEAL CRANKCASE REMOVAL	1
7	700707	R-932 PULLER, COLLAR COUPLING	1
8	701343	TOOL PISTON RING PLIER	1
9	701159	PISTON LOCKING TOOL FOR 185CC	1
10	701349	TOOL OIL SEAL 20MM CRANKCASE PRESSING	1
11	701350	TOOL OIL SEAL 25MM CRANKCASE PRESSING	1
12	701351	CIRCLIP INSTALLER TOOL FOR 185CC	1

R-900 TOOL KIT FOR MARK-3® PUMP  
ITEM NO. 250158

The new MARK-3® comes with a maintenance-free sealed bearing



MARK-3® TOOL KIT

ID	ITEM NO	DESCRIPTION	QTY
--	250158	R-900 FIELD TOOL KIT MARK-3	--
1	800081	R-908 WRENCH - OPEN END 5 & 8 MM	2
2	700541	A-3023 CARBURETTOR ADJUSTING TOOL	1
3	800492	R-902 SCREWDRIVER 1/8" BLADE	1
4	700539	271-928 6MM T-HANDLE HEX 10.5" LG	1
5	800084	R-904 WRENCH - SPARK PLUG	1
6	800082	R-905 HANDLE - ROD	1
7	700732	R-903 FEELER GAUGE 32 BLADES	1
8	800700	271-346 SCREWDRIVER FLAT 1/4" X 4"	1
9	700538	271-923 WRENCH - ADJUSTABLE 8"	1
10	700726	R-910 WRENCH - OPEN END 1/2" & 9/16"	1
11	600153	R-911M WRENCH, BOX & OPEN END 13MM	1
12	600160	R-906M WRENCH, BOX & OPEN END 10 MM	1
13	700537	271-488 TOOL ROLL BAG	1

\*Grease gun no longer included in tool kit. Can be ordered separately.



# FUEL TANK ACCESSORIES FOR THE MARK-3®

## METAL JERRY CAN MODEL NO. 600376

Heavy-duty construction throughout, this pick-up portable unit has no petcock or other cumb protrusions. Its self-sealing quick coupler enables gasoline line to be changed from one can to . in seconds. 5 US gals (18.9 L).

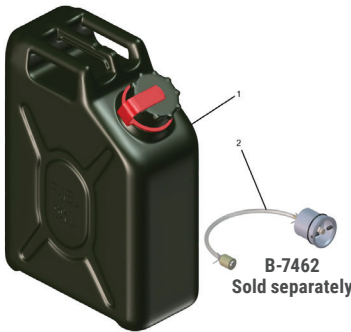
- US Forest Service approved.
- NSN 7240-01-044-5523



## AIR TRANSPORT FUEL TANK MODEL NO. 600429

Tough, lightweight, and rust proof with its unique and integrated fuel supply adaptor, this container meets the rigid US Military and UN standards (certification #MIL-C-53109). It is the only container to be registered by Transport Canada for UN performance packaging (certification #UN 3H1 / Y1.0 / 200 / yy / Can / Spr 2 456 / 2.3mm). Seamless all-plastic material, permanently "olive drab" coloured finish. 5.3 US gals (20 L). Includes inner filter and ball-type 1/4-turn fuel supply adaptor B-7462.

- Approved for air transport via rotary or fixed wing aircraft.



## MARINE FUEL TANK MODEL NO. 800863

The slim design of this marine fuel tank allows storing standing up or lying down. Comes with a standard fuel gauge. UL and CSA standards certification for portable marine fuel tanks. High-density polyethylene, permanently red coloured finish.

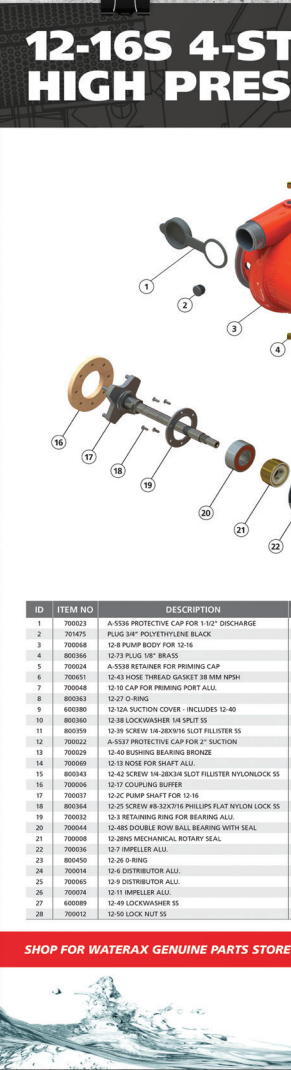
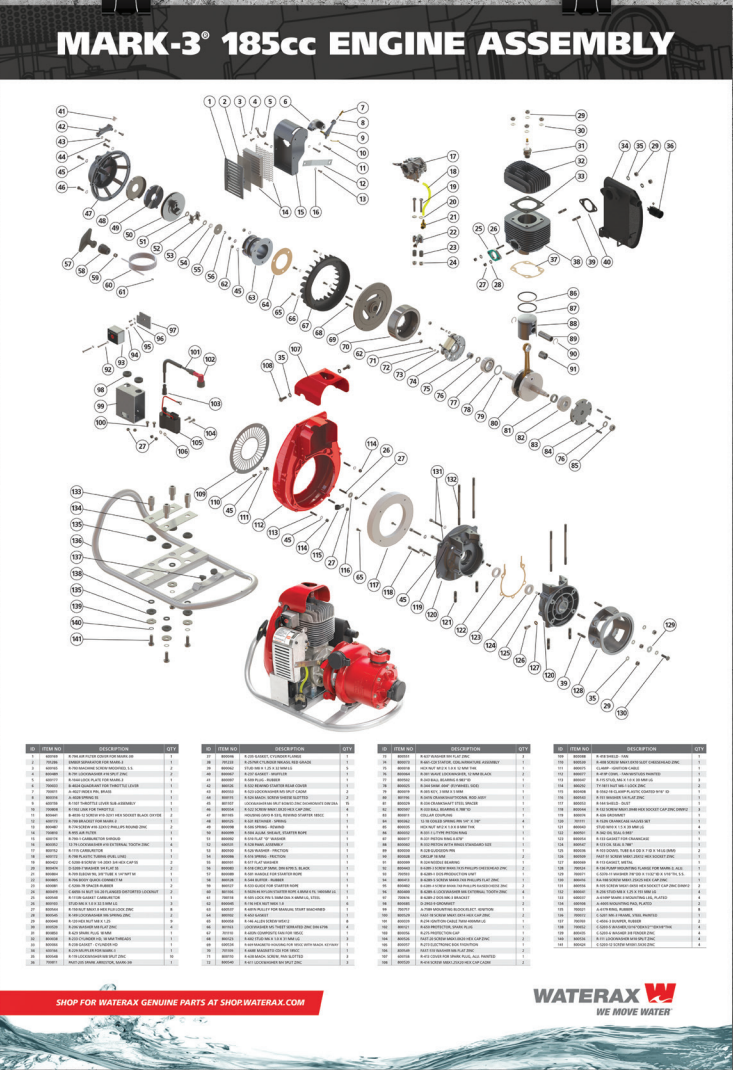
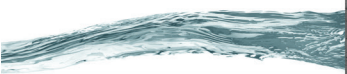
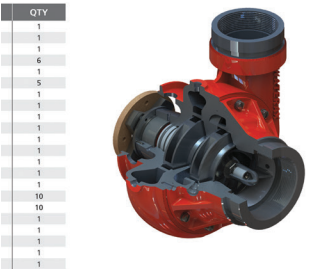
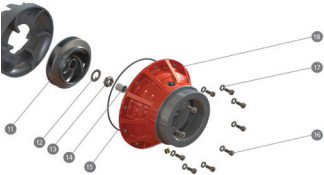
- Capacity of 6.6 US gals (25 L).



Tanks sold separately

ITEM NO.	DESCRIPTION
600376	FA-352GSA-N 5 GAL (19L) JERRY CAN, METAL NSN 7240-01-044-5523
600429	FA-552Q NECT FUEL AIR TRANSPORT TANK WITH QUICK CONNECT
800863	FA-452 MARINE FUEL TANK 6.6 GAL (25L) EPA
600136	R-1206A-GSA 5' FUEL LINE PRIMING BULB SAE FEM END
600605	12-401B-NSC COMPLETE FUEL LINE, STANDARD STYLE

\*Product and specifications are subject to change without notice.  
\*All pictures shown are for illustration purpose only, actual product may vary due to product enhancement.



# ARE YOU A WATERAX PUMP MECHANIC?

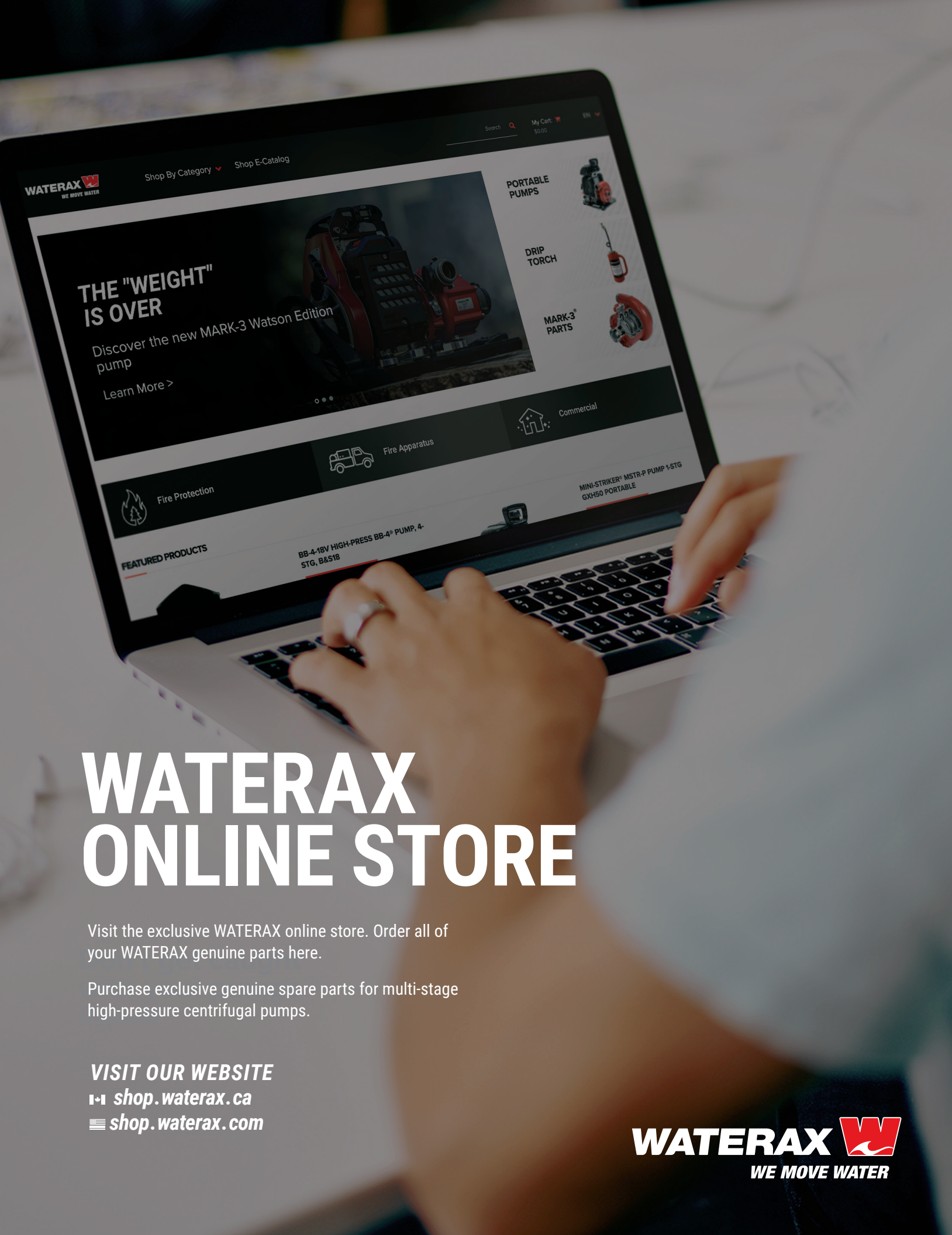
WE NOW HAVE 3 ILLUSTRATED PARTS BREAKDOWN POSTERS AVAILABLE:

- MARK-3® 185cc Engine Assembly
- 12-16S 4-Stage High-Pressure Pump End
- B2X 2-Stage Mid-Range Pump End

ALL WATERAX GENUINE SPARE PARTS ARE AVAILABLE ON THE ONLINE STORE.  
GET YOUR FREE POSTER WITH YOUR NEXT ONLINE ORDER!







# WATERAX ONLINE STORE

Visit the exclusive WATERAX online store. Order all of your WATERAX genuine parts here.

Purchase exclusive genuine spare parts for multi-stage high-pressure centrifugal pumps.

**VISIT OUR WEBSITE**  
📱 [shop.waterax.ca](https://shop.waterax.ca)  
💻 [shop.waterax.com](https://shop.waterax.com)



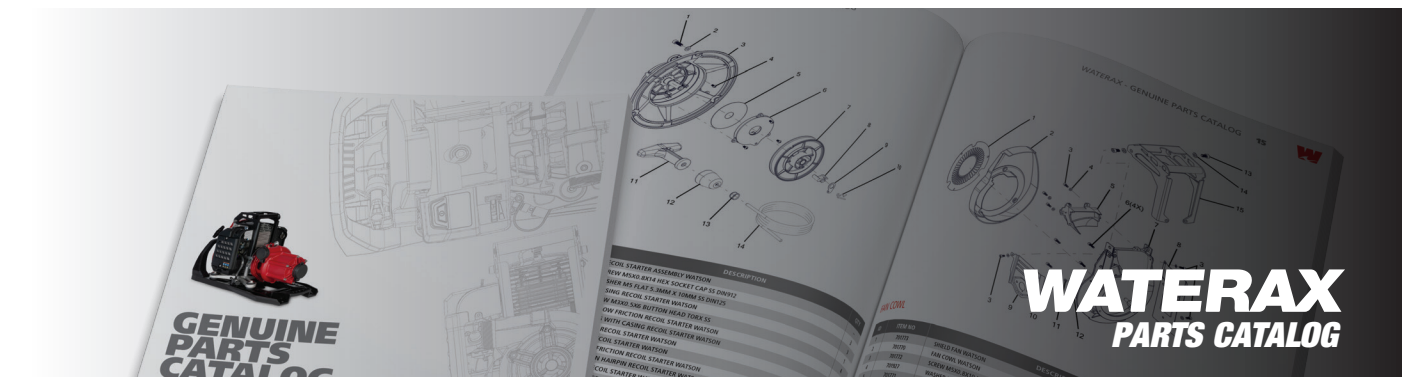
## ACTIVATE YOUR ACCOUNT

By registering you will be able to place orders online, have access to your net pricing and discounts, create quotes, estimate shipping rates, view the status of past and current orders, get access to the latest product catalogs and view your latest statements.



## WATERAX PARTS CATALOG

This catalog is now available online and features expanded views of all our pumps and pump ends. The catalog is interactive and connected to our NEW online store, you can now show within the pages of your catalog and checkout on [shop.waterax.com](https://shop.waterax.com).



## WATERAX TECHNOLOGY CENTER

Join the community for WATERAX Pump Mechanics! Log in to the WATERAX Technology Center to access step-by-step mechanic guidebooks, detailed how-to videos, tools and relevant parts. You can also post comments and ask questions directly on the platform to get answers from our engineering team.





## **WATERAX INC.**

6635 Henri-Bourassa W.  
Montreal, QC H4R 1E1

T 514 637-1818  
F 514 637-3985  
TF 1 855 616-1818



## **WATERAX CORP.**

3701 Innovation Way,  
Valparaiso, IN 46383

T 360-574-1818  
F 360-571-0443  
TF 1 855 616-1818

INFO@WATERAX.COM  
WATERAX.COM



TERMS AND CONDITIONS AVAILABLE ONLINE



**WATERAX**   
**WE MOVE WATER**

FSC stands for "Forest Stewardship Council", an international not-for-profit organization dedicated to promoting responsible forestry. When you see this logo, you can be confident that we are not harming the world's forests.

